



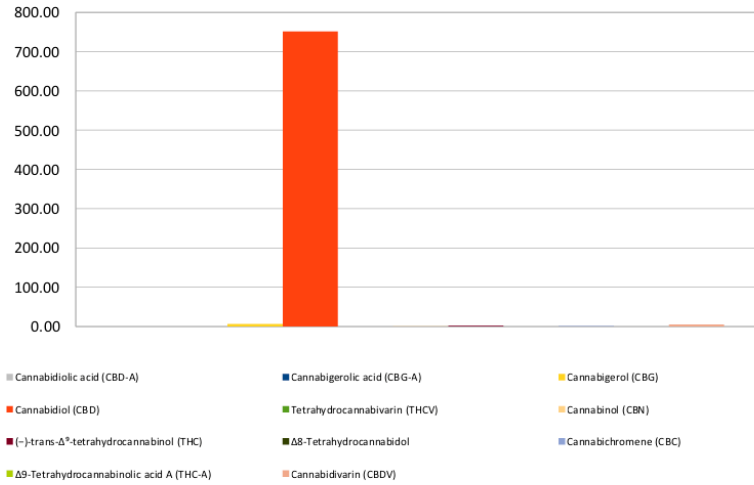
# Cannabinoid Profile

**Customer:** DaoZen LLC  
**Customer Sample ID:** LD2  
**Laboratory Number:** 201902-1123  
**Extraction Technician:** RH  
**Analytical Chemist:** MF

Extraction Date(s)	Analysis Date(s)
2/26/2019	2/26/2019

Cannabinoid (HPLC)	Results		
	LOD (mg/g)	Percent	mg/g
Cannabidivarin (CBDV)		0.55%	5.48
Cannabidiolic acid (CBD-A)	<0.2		
Cannabigerolic acid (CBG-A)	<0.2		
Cannabigerol (CBG)		0.66%	6.63
Cannabidiol (CBD)		75.16%	751.61
Tetrahydrocannabivarin (THCV)	<0.2		
Cannabinol (CBN)		0.05%	0.46
(-)-trans- $\Delta^8$ -tetrahydrocannabinol (THC)		0.22%	2.18
$\Delta^8$ -Tetrahydrocannabinol	<0.2		
Cannabichromene (CBC)		0.11%	1.15
$\Delta^9$ -Tetrahydrocannabinolic acid A (THC-A)	<0.2		
<b>Cannabinoids Total</b>		<b>Percent</b>	<b>mg/g</b>
<b>Max Active THC</b>		<b>0.22%</b>	<b>2.18</b>
<b>Max Active CBD</b>		<b>75.16%</b>	<b>751.61</b>
<b>T. Active Cannabinoids</b>		<b>76.75%</b>	<b>767.51</b>
<b>Total Cannabinoids</b>		<b>76.75%</b>	<b>767.51</b>
<b>Ratios</b>			
<b>344.30 CBD to THC</b>		<b>0.00 :1 THC to CBD</b>	

Cannabinoid (mg/g)





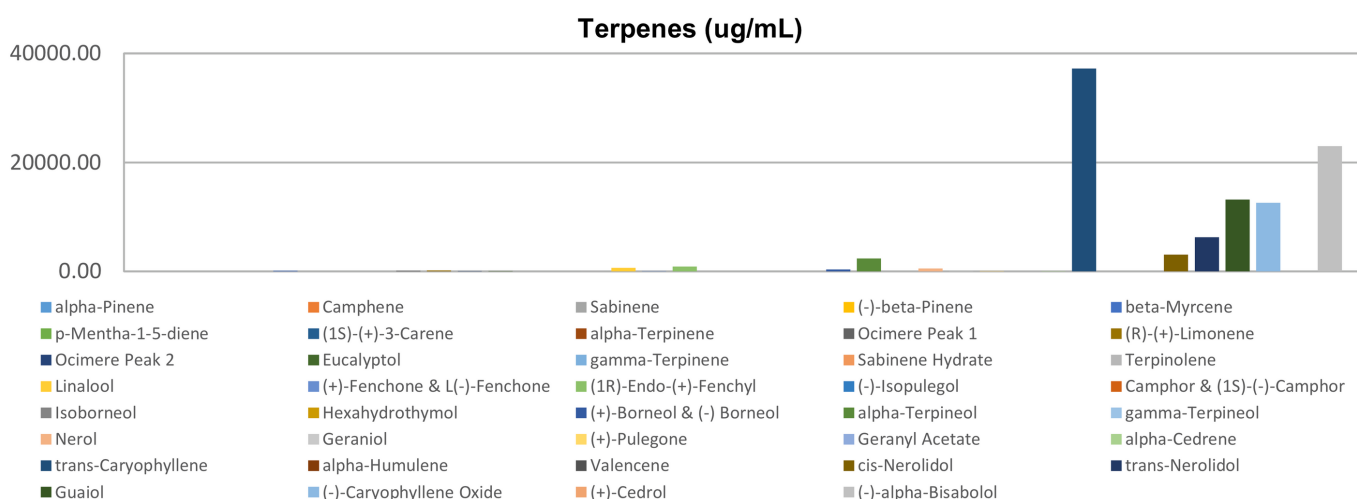
# Terpenes Profile

**Customer:** DaoZen LLC  
**Customer Sample ID:** T  
**Laboratory Number:** 201902-1122  
**Extraction Technician:** RH  
**Analytical Chemist:** MF  
**Density (g/mL):** 1.141

Extraction Date(s)	Analysis Date(s)
2/26/2019	2/26/2019

Terpene	Results	Terpene	Results
	ug/mL		ug/mL
alpha-Pinene		Isoborneol	
Camphene		Hexahydrothymol	
Sabinene		(+)-Borneol & (-) Borneol	315.68
(-)-beta-Pinene		alpha-Terpineol	2325.35
beta-Myrcene	108.58	gamma-Terpineol	
p-Mentha-1-5-diene		Nerol	513.14
(1S)-(+)-3-Carene		Geraniol	73.12
alpha-Terpinene		(+)-Pulegone	40.72
Ocimere Peak 1	88.00	Geranyl Acetate	
(R)-(+)-Limonene	141.86	alpha-Cedrene	41.59
Ocimere Peak 2	54.29	trans-Caryophyllene	37262.01
Eucalyptol	67.86	alpha-Humulene	
gamma-Terpinene		Valencene	
Sabinene Hydrate		cis-Nerolidol	3075.80
Terpinolene	23.64	trans-Nerolidol	6250.54
Linalool	648.00	Guaiol	13156.53
(+)-Fenchone & L(-)-Fenchone	45.53	(-)-Caryophyllene Oxide	12607.48
(1R)-Endo-(+)-Fenchyl	898.44	(+)-Cedrol	
(-)-Isopulegol		(-)-alpha-Bisabolol	22982.00
Camphor & (1S)-(-)-Camphor			

Empty result indicates data is less than detection limit. Reporting Limit is roughly 100 ug/g depending on amount extracted.



Altitude Consulting, LLC utilizes NIST traceable Reference Standards and Certified Reference Material to calibrate analytical instruments along with proven analytical methods. The methods are applied in the most ethical manner following good laboratory practice guidelines. The results of this report are based solely on the sample submitted and cannot be reproduced.



Altitude Consulting LLC  
 3262 So. Platte River Drive  
 Englewood, CO. 80110

Email: Gary@AltitudeConsultingllc.com  
 Ph: 303.390.1662  
 www.altitudeconsultingllc.com

<b>Sample Name</b>	201902-0770	<b>Operator</b>	LCTQ
<b>Sample ID</b>	Legal Distillate 001	<b>Method</b>	Triple Quad 4500
<b>Acquisition Date</b>	2019-02-19T13:37:14	<b>Result Table</b>	02192019
<b>Data File</b>	20190104.wiff	<b>Sample Type</b>	

Pesticides	Conc. (ppm)	Pos/Neg	Action Level (ppm)	Comments
ACEPHATE	0.000	NEG	0.040	
ACEQUINOCYL	0.000	NEG	0.200	
ACETAMIPRID	0.000	NEG	0.020	
ALDICARB	0.000	NEG	0.040	
ABAMECTIN	0.000	NEG	0.070	
AVERMECTIN B1B	0.000	NEG	0.070	
AZOXYSTROBIN	0.000	NEG	0.020	
BIFENAZATE	0.000	NEG	0.020	
BIFENTHRIN	0.000	NEG	0.020	
BOSCALID	0.000	NEG	0.040	
CARBARYL	0.000	NEG	0.020	
CARBOFURAN	0.000	NEG	0.020	
CHLORANTRANILIPROLE	0.000	NEG	0.020	
CHLOREFENAPYR	0.000	NEG	0.100	
CHLORPYRIFOS	0.000	NEG	0.020	
CLOFENTEZINE	0.000	NEG	0.020	
CYFLUTHRIN	0.000	NEG	0.100	
CYPERMETHRIN	0.000	NEG	0.100	
DAMINOZIDE	0.000	NEG	0.100	
DIAZINON	0.000	NEG	0.020	
DICHLORVOS	0.000	NEG	0.010	
DIMETHOATE	0.000	NEG	0.020	
ETHOPROPHOS	0.000	NEG	0.020	
ETOFENPROX	0.000	NEG	0.040	
ETOXAZOLE	0.000	NEG	0.010	
FENOXYCARB	0.000	NEG	0.020	
FENPYROXIMATE	0.000	NEG	0.040	
FIPRONIL	0.000	NEG	0.040	
FLONICAMID	0.000	NEG	0.100	
FLUDIOXONIL	0.000	NEG	0.040	
HEXYTHIAZOX	0.000	NEG	0.100	
IMAZALIL	0.000	NEG	0.040	
IMIDACLOPRID	0.000	NEG	0.020	
KRESOXIM-METHYL	0.000	NEG	0.040	

P = Present but below limit

Disclaimer: The development and performance characteristics of these tests were determined by Altitude Lab Solutions and have not been cleared by the FDA.



Altitude Consulting LLC  
3262 So. Platte River Drive  
Englewood, CO. 80110

Email: Gary@AltitudeConsultingllc.com  
Ph: 303.390.1662  
www.altitudeconsultingllc.com

MALATHION A	0.000	NEG	0.050	
METALAXYL	0.000	NEG	0.020	
METHIOCARB	0.000	NEG	0.020	
METHOMYL	0.000	NEG	0.040	
MGK 264	0.000	NEG	0.020	
MYCLOBUTANIL	0.000	NEG	0.040	
NALED	0.000	NEG	0.050	
OXAMYL	0.000	NEG	0.100	
PACLOBUTRAZOL	0.000	NEG	0.040	
PARATHION METHYL	0.000	NEG	0.100	
PERMETHRINS	0.000	NEG	0.040	
PHOSMET	0.000	NEG	0.020	
PIPERONYL BUTOXIDE	0.000	NEG	0.200	
PRALLETHRIN	0.000	NEG	0.020	
PROPICONAZOLE	0.000	NEG	0.040	
PROPOXURE	0.000	NEG	0.020	
PYRETHRINS CINERIN 1	0.000	NEG	0.500	
PYRETHRINS JASMOLIN 1	0.000	NEG	0.500	
PYRETHRINS PYRETHRIN 1	0.000	NEG	0.500	
PYRIDABEN	0.000	NEG	0.020	
SPINOSYN A	0.000	NEG	0.060	
SPINOSYN D	0.000	NEG	0.060	
SPIROMESIFEN	0.000	NEG	0.030	
SPIROTETRAMAT	0.000	NEG	0.020	
SPIROXAMINE	0.000	NEG	0.040	
TEBUCONAZOLE	0.000	NEG	0.010	
THIACLOMPRID	0.000	NEG	0.020	
THIAMETHOXAM	0.000	NEG	0.020	
TRIFLOXYSTROBIN	0.000	NEG	0.020	

P = Present but below limit

Disclaimer: The development and performance characteristics of these tests were determined by Altitude Lab Solutions and have not been cleared by the FDA.